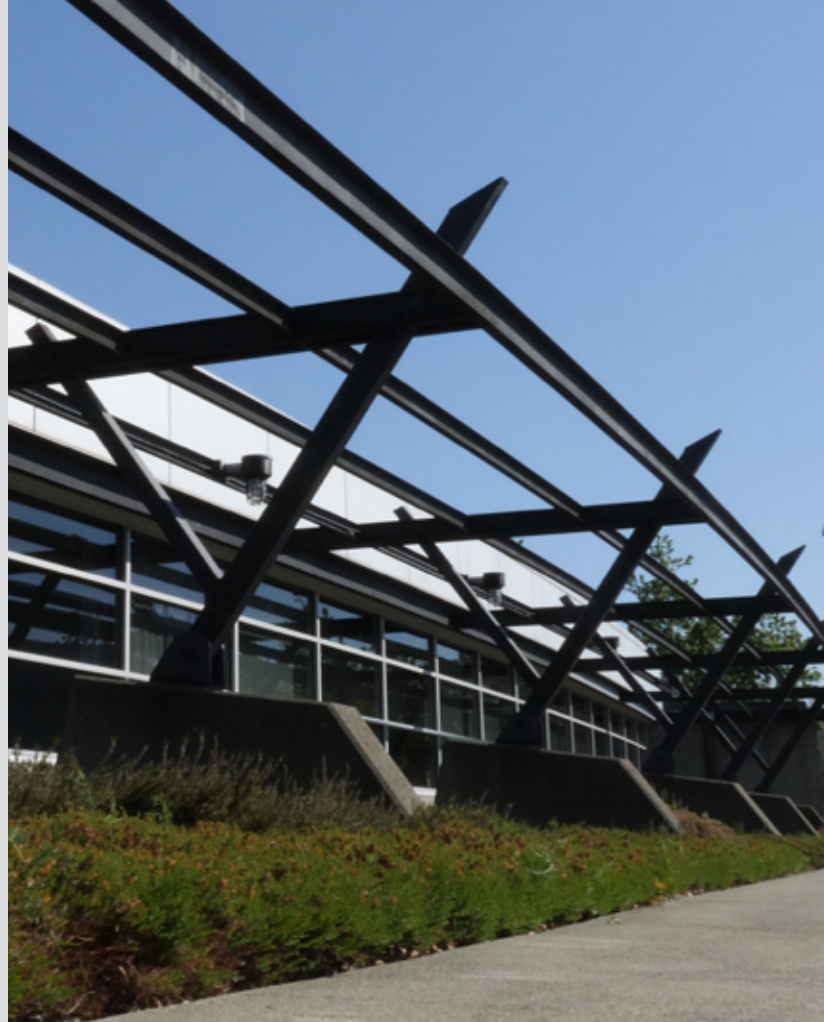




A SUNBELT RENTALS
COMPANY

FRASERWOOD STUDIO

Fraserwood Studio offers 25 feet clear height ceilings and 45 to clear span column spacing, with five sound stages, a mill shop, a paint shop and additional support areas across 119,000 square feet of production-ready space. Fully furnished production offices with fibre-optic connectivity make for a modern turnkey work environment.





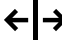

22031 Fraserwood Way, Richmond, BC

[View on Map](#)

HIGHLIGHTS

- Production office with IP phones
- 10 GB fibre-optic service
- Kitchen complete with fridge and dishwasher
- Full service paint shop, complete with paint spray booth
- Mill shop
- Wardrobe, set decoration and props lockups

FEATURES

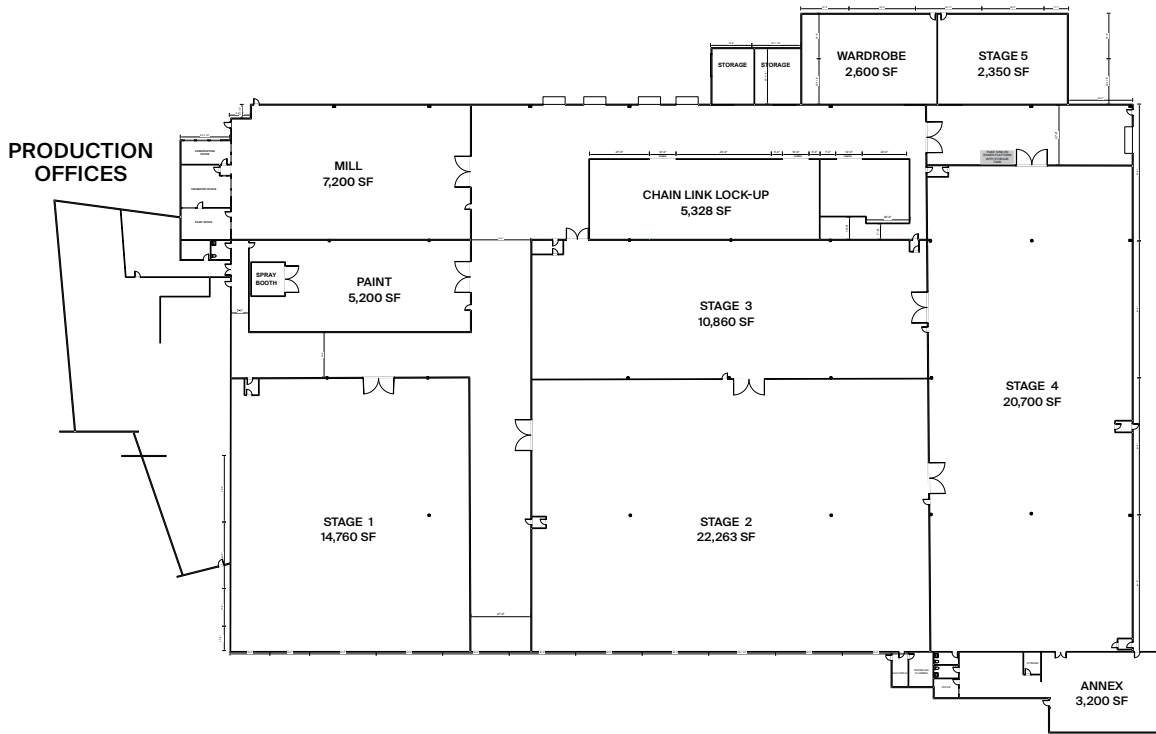
-  116 Parking Spots
-  25' Ceiling Height
-  45' Column Spacing
-  3,200 Amps



Nearby:

- 12 minutes from WFW Ironwood Studio
- 15 mins from WFW Copperwood Studio
- 16 mins from YVR International Airport
- 20 mins from Downtown Vancouver
- 20 mins from WFW

FLOOR PLAN



BUILDING SPECS

Stage 1:	14,760 sq. ft.
Stage 2:	22,263 sq. ft.
Stage 3:	10,860 sq. ft.
Stage 4:	20,700 sq. ft.
Stage 5:	2,350 sq. ft.
Total Stage Space:	70,933 sq. ft.
Mill:	7,200 sq. ft.
Paint:	5,200 sq. ft.
Production Offices:	9,200 sq. ft.
Annex:	3,200 sq. ft.
Wardrobe:	2,600 sq. ft.
Chain Link Lock-up:	5,328 sq. ft.
Total Support Space:	32,728 sq. ft.
Total Facility Space:	*119,000 sq. ft.

*Including common and facility areas.

